

# Nextech Eurocraft™ Trading Desks

## Overview

*Nextech is dedicated to creating advanced console, technical desk, trading desk, and workstation solutions. Our expertise in designing furniture for commercial markets, that take advantage of the latest technology and workplace ergonomics, has made us the top choice among forward thinking and image-oriented customers.*

*Since our initial formation in 1957 and our first technical desk in 1978, our products are designed to support a wide range of applications with advanced furniture technology in the most space efficient manner.*

*We have built our reputation upon a commitment to product, performance, and customer service.*

*Perfectly, Flawlessly, & Consistently.*



## Table Of Contents

- |                  |                                |
|------------------|--------------------------------|
| 3. Overview      | 7. What's Inside               |
| 4. Options       | 8. Electrical / Data & Cooling |
| 5. Customization | 9. Case Studies                |
| 6. Lift Desks    | 10. Case Studies               |



The Nextech **Eurocraft™** Trading Desk is the most cost effective and flexible solution engineered to be used in a trading environment.



By adding or changing standard features it can be used in many application areas from trading desks to disaster recovery furniture to technical workstation requirements.



Desks are available as one-person or as a two-person units sharing a single frame and IT storage area. Utilizing intelligently flexible standard components, every project can be precisely specified to fit the client needs, budgets and designer aesthetics.



Whether its plastic laminate, wood veneer, paint or metal finishes, Nextech can accommodate your needs.



Looking for an open concept? This trading desk is shown with a toolbar in lieu of slotwall.



Fixed or sliding CPU shelving is available, as are sliding or hinged doors which can be perforated for cooling intake.



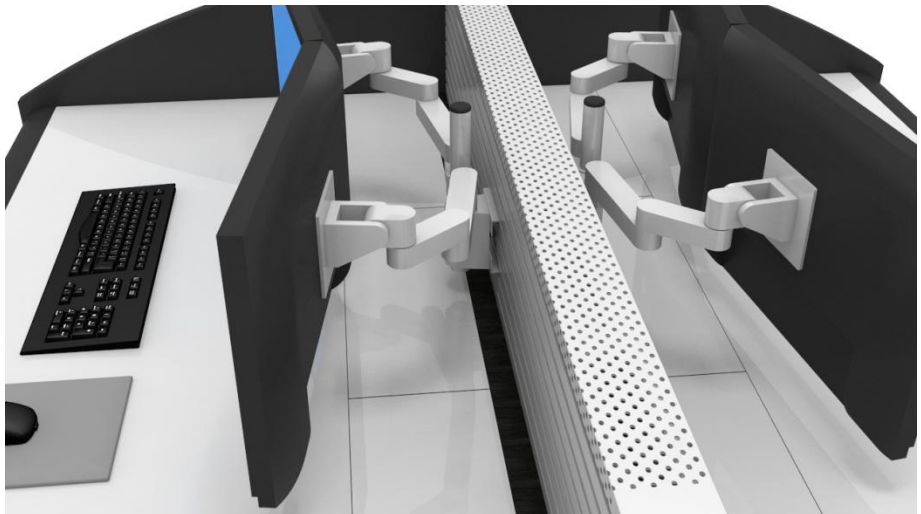
Here is a trading desk with slotwall, polyurethane nosing and space saver pedestal drawer unit and equipment storage unit at end.



We can customize anything we do. This client wanted additional binder storage along with a unique look which included aluminum inlays and painted reveals on a veneer end panel along with fabric wrapped tack panel doors on the gantry units.

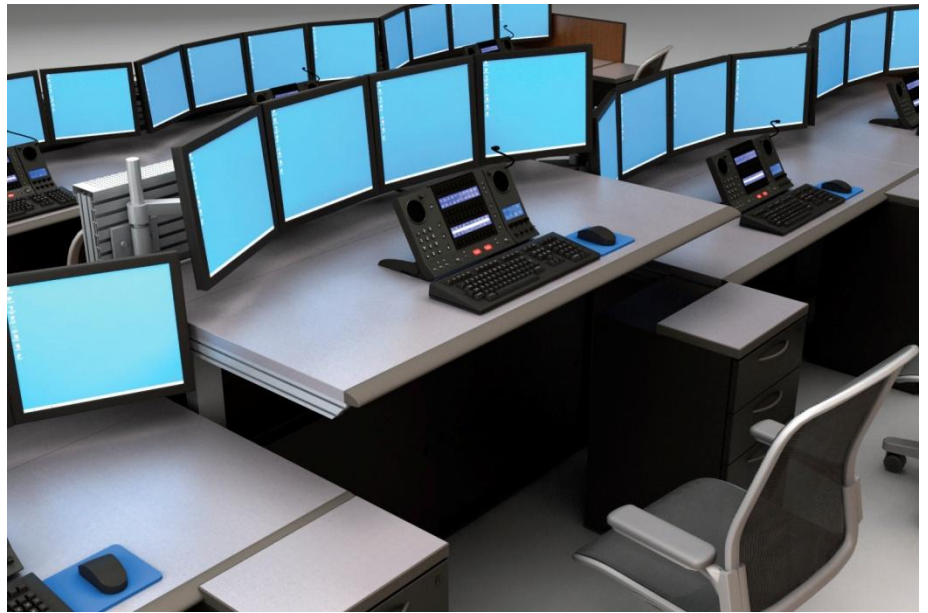


Our midwall with slotwall accepts all monitor arms. The midwall acts as a chimney pulling heat out of the CPU cabinet below.



Elevate your expectations with our electric lift console; 600lb load max, per desk, 5.4 amps max draw.

Lift desk has electronic controls with preset heights and 19 1/2" adjustment range.



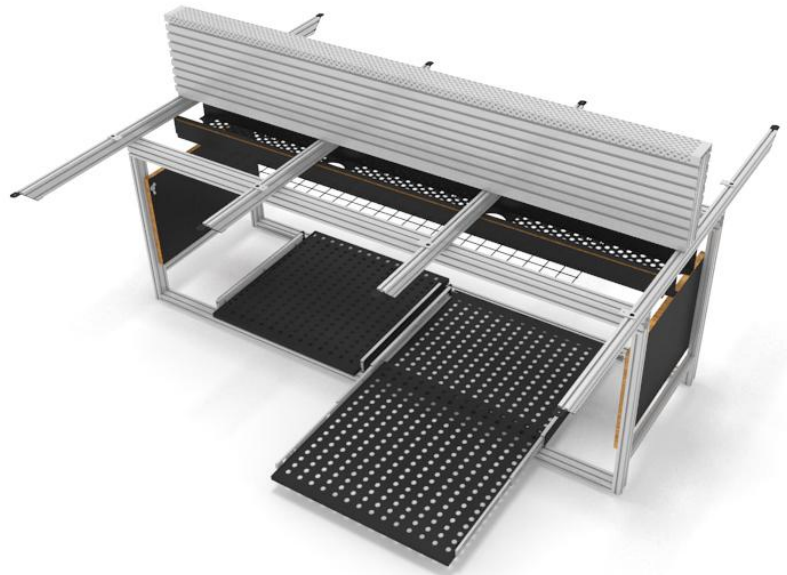
We can place our proposed desks in your floor plans in 3-D. Whether your emphasis is to improve performance and profitability, maximize your floor space and monitoring effectiveness, or to simply integrate new technology into a standard product, Nextech Corporation can help you with its unmatched experience and knowledge.



Custom worktops, veneer selections, acrylic transaction shelf, and lift options shown here.



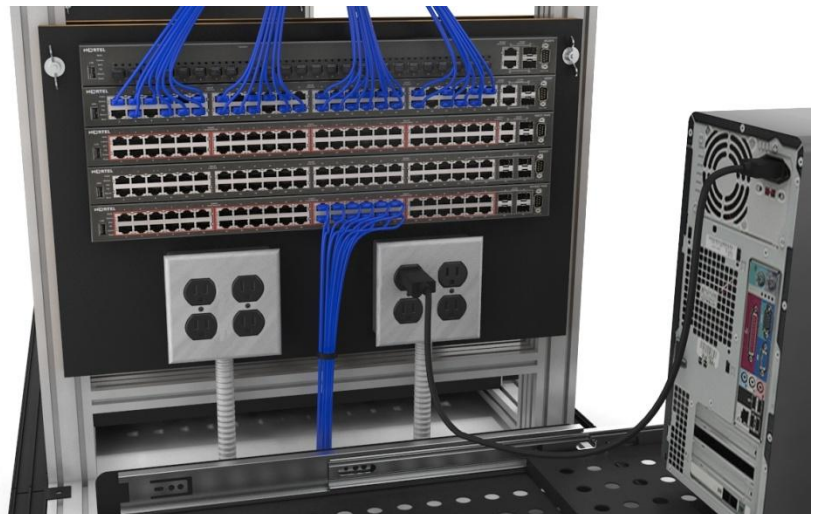
Nextech's unique frame is constructed from the same extruded aluminum alloys used in aircraft construction. An efficient and versatile cable management tray system, just below the worksurface, accessed by removable in-fills with grommets, allows easy relocation and reconfiguration of cables and wiring.



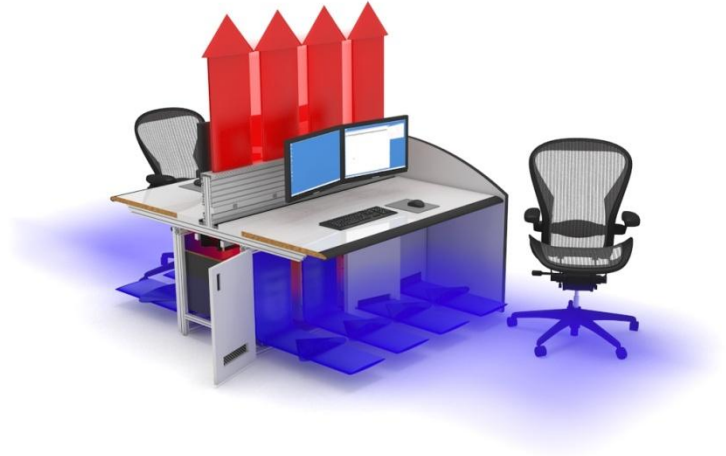
Nextech can accommodate any EIA standard or custom rack-mounted equipment in equipment counters or desk frames. Custom solutions for wiring and cooling are available as well.



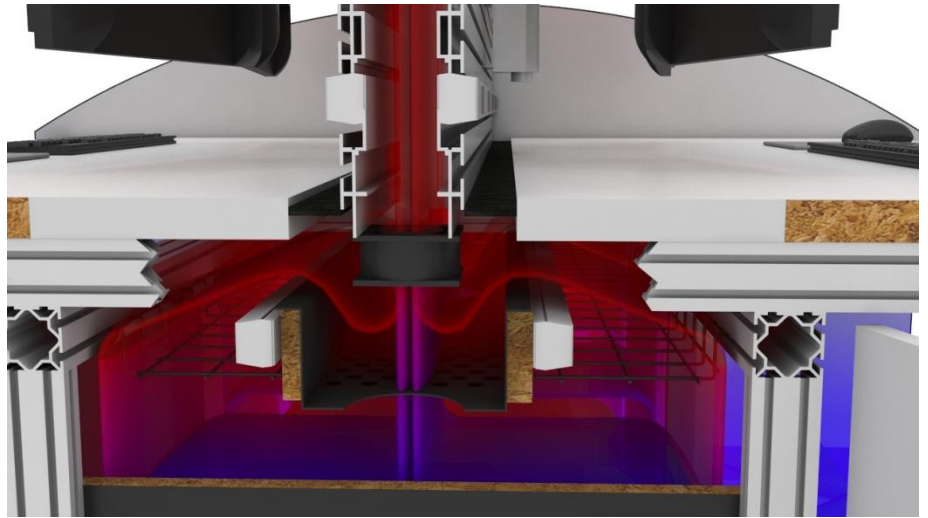
We can customize mounting options for power and data access. Efficient cable management provides better cooling, and is more space-effective.



We supply optional long life A/C or D/C cooling fans to supplement air movement where required.



Our midwall with optional slotwall has a natural convection effect. The midwall acts as a chimney pulling heat out of the CPU cabinet below.



We can customize data and electric to meet your needs. Ideal for high-tech companies; command and control rooms, ambulance dispatch centers, security rooms, data rooms, trading floors, and network operation centers.



# Case Studies

## Bryant College

Mock Trading Room

27 Positions & 2 Equipment  
Counters

Rift Cut White Oak Veneer

Heavy Duty Units Rated For 24/7  
Use

Divider Panels & Slotwall For  
Student Privacy



## Bryant College

Continued



## Epic Energy

Energy Company Trading Room

72 Positions &

High Gloss Plastic Laminate

Heavy Duty Units Rated For 24/7  
Use

Divider Panels



**DPS**

Ohio Department of Public Safety  
8 Positions & Equipment Counter  
Heavy Duty Units Rated For 24/7 Use  
Plastic Laminate



**Robert Baird & Company**

Trading Rooms  
Hundreds Of Positions From Full Trading Floors In Milwaukee To Smaller Outfits Scattered Throughout The U.S.  
Walnut Veneer End Panels With Aluminum Base  
Heavy Duty Units Rated For 24/7 Use  
Large CPU Cabinets  
Increased Depth For Leg Room



**Hughes Network Systems**

Trading Room  
9 Positions  
Plastic Laminate  
Heavy Duty Units Rated For 24/7 Use

