

# Nextech **Signature**<sup>™</sup> Consoles

## Overview

*Nextech is dedicated to creating advanced console, technical desk, trading desk, and workstation solutions. Our expertise in designing furniture for commercial markets, that take advantage of the latest technology and workplace ergonomics, has made us the top choice among forward thinking and image-oriented customers.*

*Since our initial formation in 1957 and our first technical desk in 1978, our products are designed to support a wide range of applications with advanced furniture technology in the most space efficient manner.*

*We have built our reputation upon a commitment to product, performance, and customer service.*

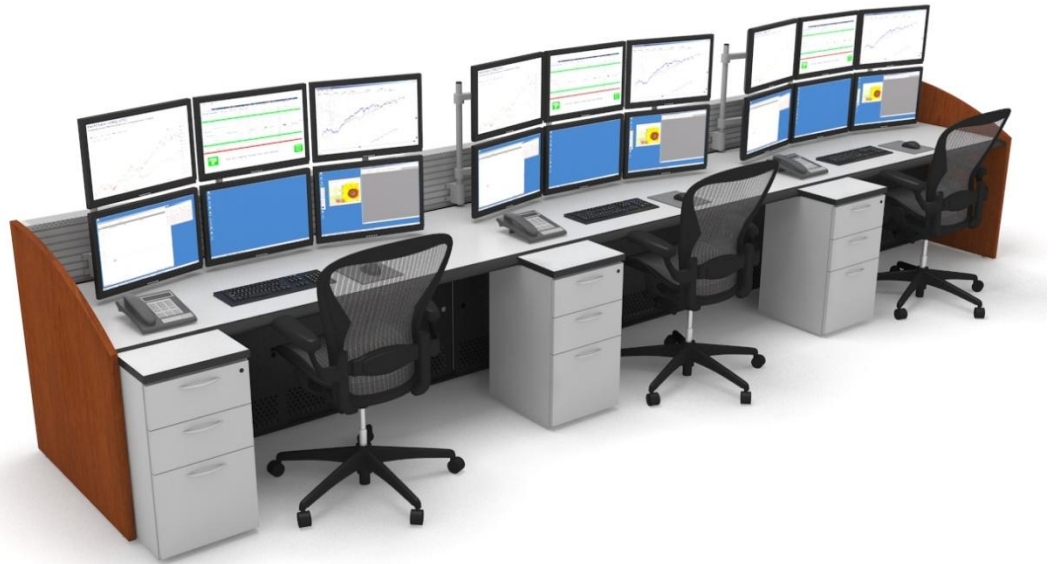
*Perfectly, Flawlessly, & Consistently.*



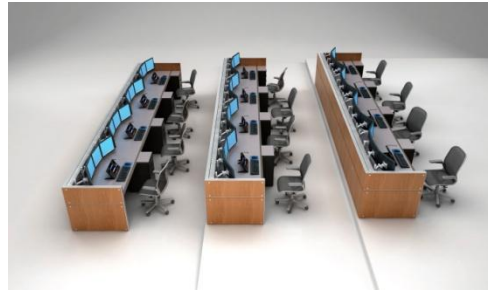
## Table Of Contents

- |                  |                                |
|------------------|--------------------------------|
| 3. Overview      | 7. What's Inside               |
| 4. Options       | 8. Electrical / Data & Cooling |
| 5. Customization | 9. Case Studies                |
| 6. Lift Consoles | 10. Case Studies               |

Signature™



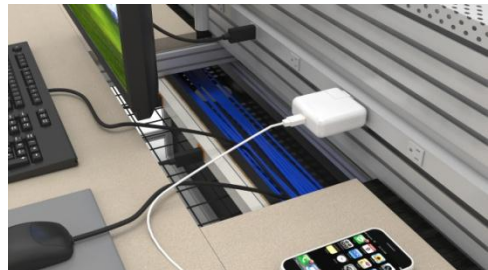
Nextech's **Signature™** Consoles and technical furniture are designed to be the best fit for a variety of applications with durability in mind.



Our consoles are purpose built to manage large quantities of computer and IT equipment with their associated cabling at each station.



Take advantage of our innovative CPU storage and cable management in our highly configurable aircraft aluminum frame structure that passed ANSI/BIFMA X5.5-2008 testing for the military.



Need more workspace and storage? The rear shelf option allows easy access to printers etc.



This console is designed specifically for technology-intensive control rooms such as transportation centers and process control rooms. Tall slotwall allows a robust platform to attach multiple and large flat screen monitors. Whether you prefer a closed layout or an open slotwall layout, Nextech can create a flexible and functional environment solution to meet your changing needs.



Fixed or sliding CPU shelving is available, as are sliding or hinged doors which can be perforated for cooling intake.



Need to match existing design and architecture? Consoles can be made to your specifications with nearly unlimited options. Body-well worktops and acrylic transaction shelves are shown here.



We can customize anything we do. This client wanted a “loop” detail routed into their back panel.



Have a custom design in mind? We will work with you to make your concept a reality. Let Nextech build you a console that optimizes ergonomics and user comfort.

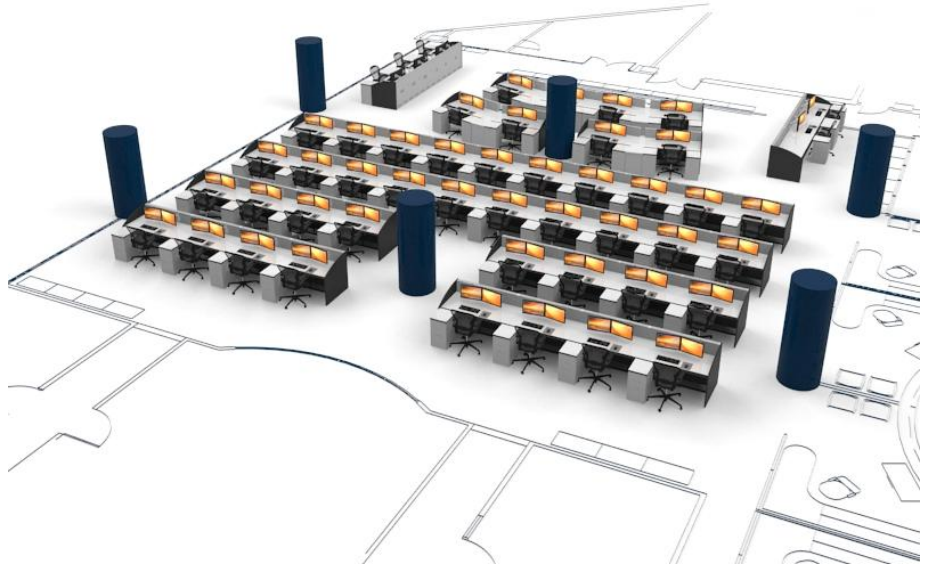


Elevate your expectations with our electric lift console; 600lb load max, per desk, 5.4 amps max draw.

Lift desk has electronic controls with preset heights and 19 1/2" adjustment range.



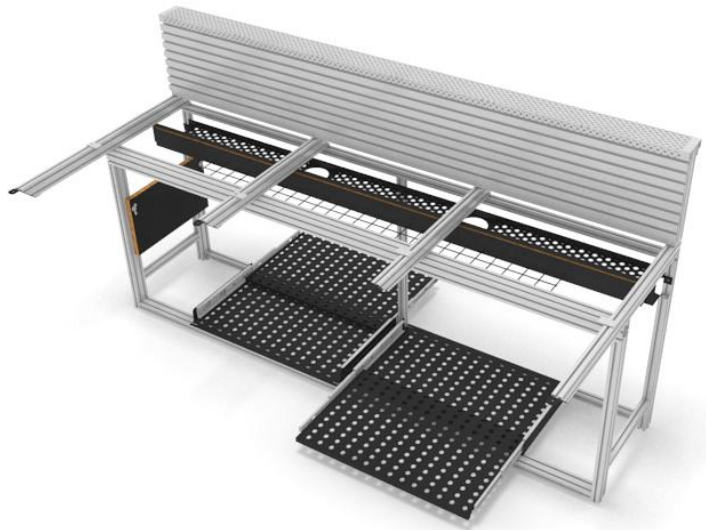
We can place our proposed desks in your floor plans in 3-D. Whether your emphasis is to improve performance and profitability, maximize your floor space and monitoring effectiveness, or to simply integrate new technology into a standard product, Nextech Corporation can help you with its unmatched experience and knowledge.



Custom worktops, veneer selections, acrylic transaction shelf, and lift options shown here.



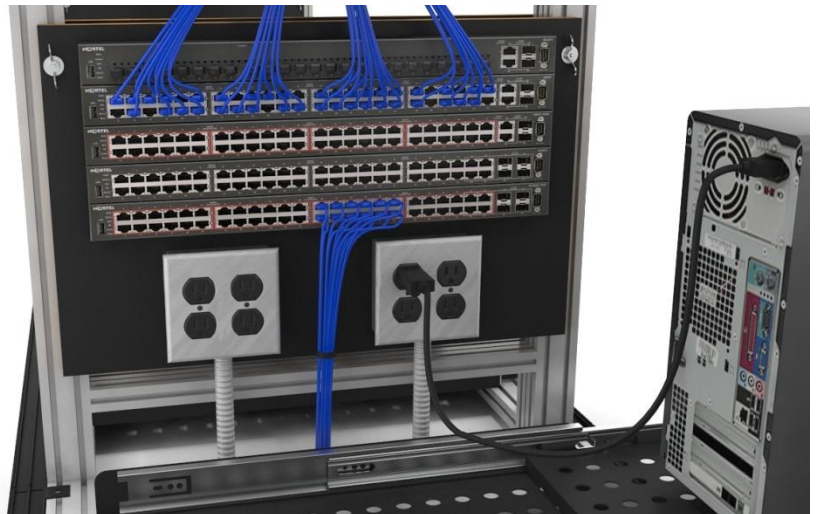
Nextech's unique frame is constructed from the same extruded aluminum alloys used in aircraft construction. An efficient and versatile cable management tray system, just below the worksurface, accessed by removable in-fills with grommets, allows easy relocation and reconfiguration of cables and wiring.



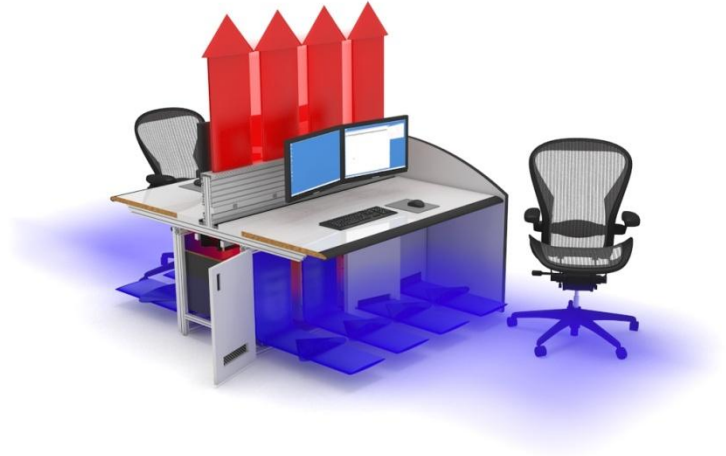
Nextech can accommodate any EIA standard or custom rack-mounted equipment in equipment counters or desk frames. Custom solutions for wiring and cooling are available as well.



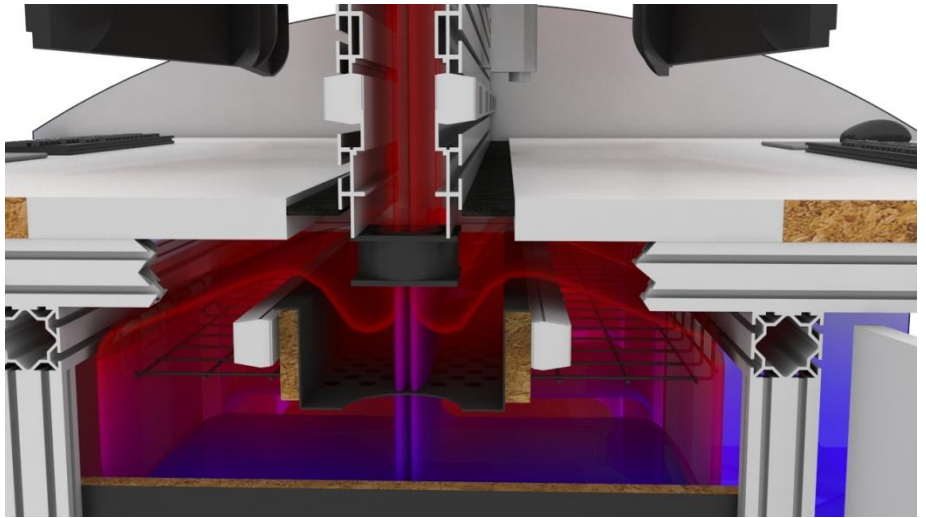
We can customize mounting options for power and data access. Efficient cable management provides better cooling, and is more space-effective.



We supply optional long life A/C or D/C cooling fans to supplement air movement where required.



Our midwall with optional slotwall has a natural convection effect. The midwall acts as a chimney pulling heat out of the CPU cabinet below.



We can customize data and electric to meet your needs. Ideal for high-tech companies; command and control rooms, ambulance dispatch centers, security rooms, data rooms, trading floors, and network operation centers.



# Case Studies

## Advanced Medical Transport

Ambulance Dispatch Company

17 Positions

Natural Birch Veneer

Custom Glass Inserts For  
End/Divider Panels & Back  
Panels

Heavy Duty Units Rated For 24/7  
Use



## Calder Casino Security

Main Casino Security Room

8 Positions

Natural Finish Aluminum with  
“Herringbone” effect

Heavy Duty Units Rated For 24/7  
Use



## Williams Energy

Energy Company Command  
Center

3 Positions

Faceted Radius

Plastic Laminate

Heavy Duty Units Rated For 24/7  
Use



### CVS

- Dispatch Center
- 4 Positions
- Lift Consoles
- Max lift 600lbs per position
- Heavy Duty Units Rated For 24/7 Use
- Plastic Laminate



### Walgreens

- Dispatch Center
- 3 Positions
- Plastic Laminate
- Heavy Duty Units Rated For 24/7 Use
- Large CPU Cabinets
- Increased Depth For Leg Room



### Broadridge

- Command Center
- 26 Positions
- Plastic Laminate
- Heavy Duty Units Rated For 24/7 Use
- Custom Lockers & Printer Cabinets

